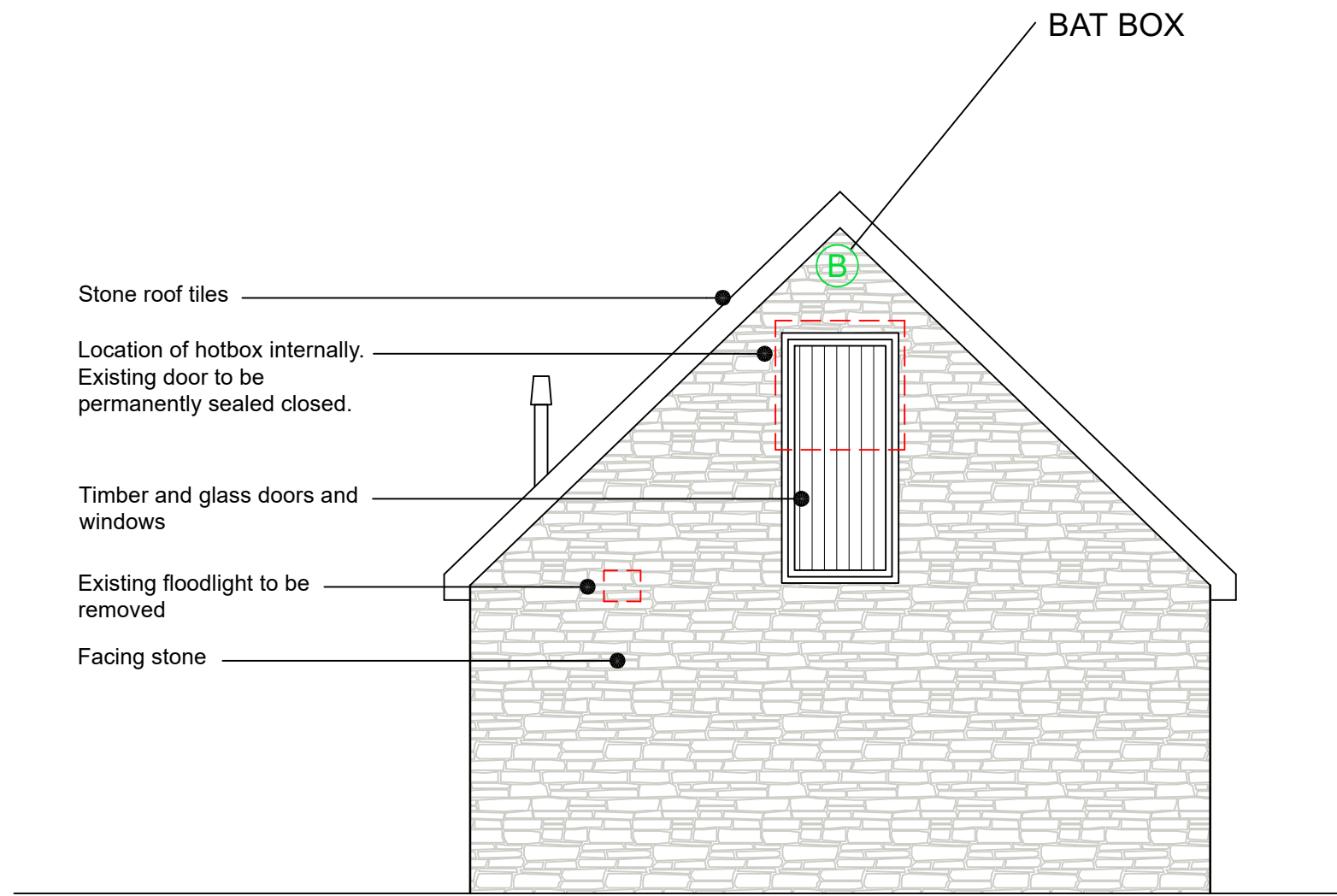
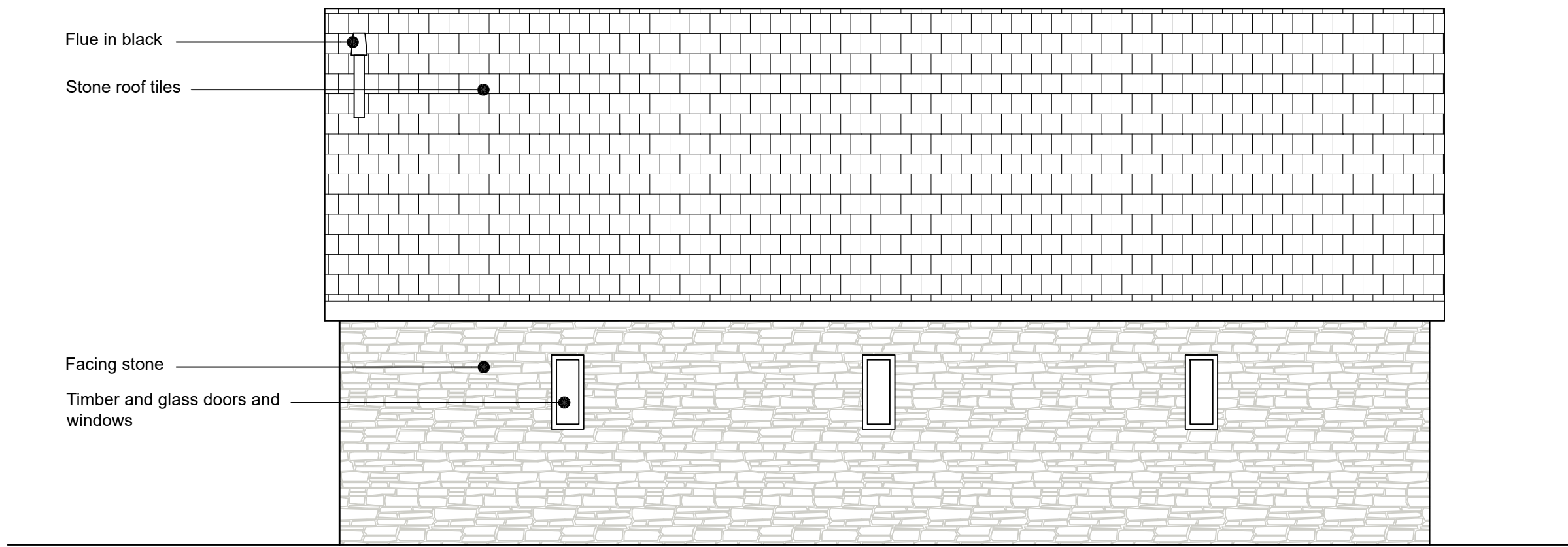


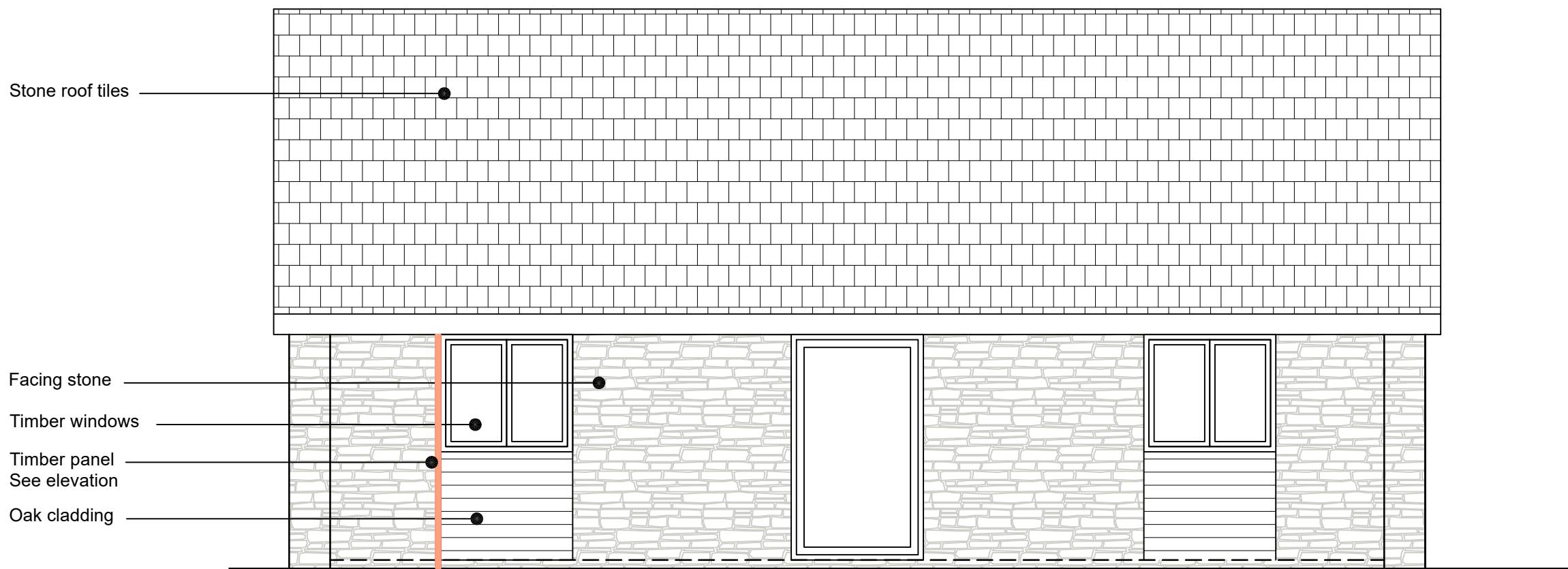
GENERAL NOTE
Do not scale.
This drawing to be read in conjunction with Structural Engineers drawings & calculations for all sub-structures, including below ground drainage & external works. Window / Door specialist drawings, M&E Consultant drawings & sub-contractors drawings & performance specifications for all specialist design elements. All works shall be carried out in strict accordance with the British Standards Codes of Practice relating to Workmanship and Materials, & current manufacturers details & instructions where appropriate.



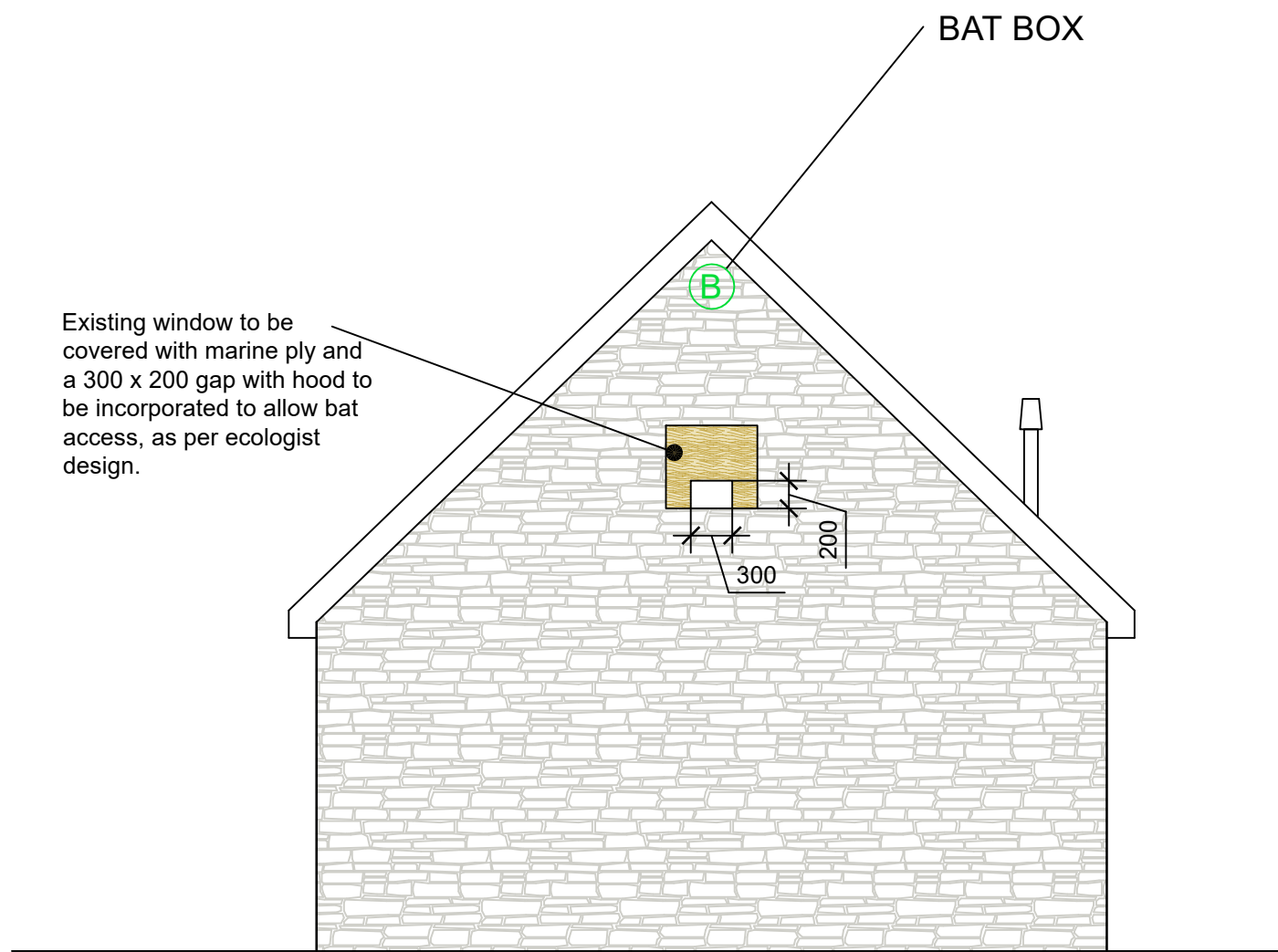
Side elevation
1:50



Rear elevation
1:50



Front elevation
1:50

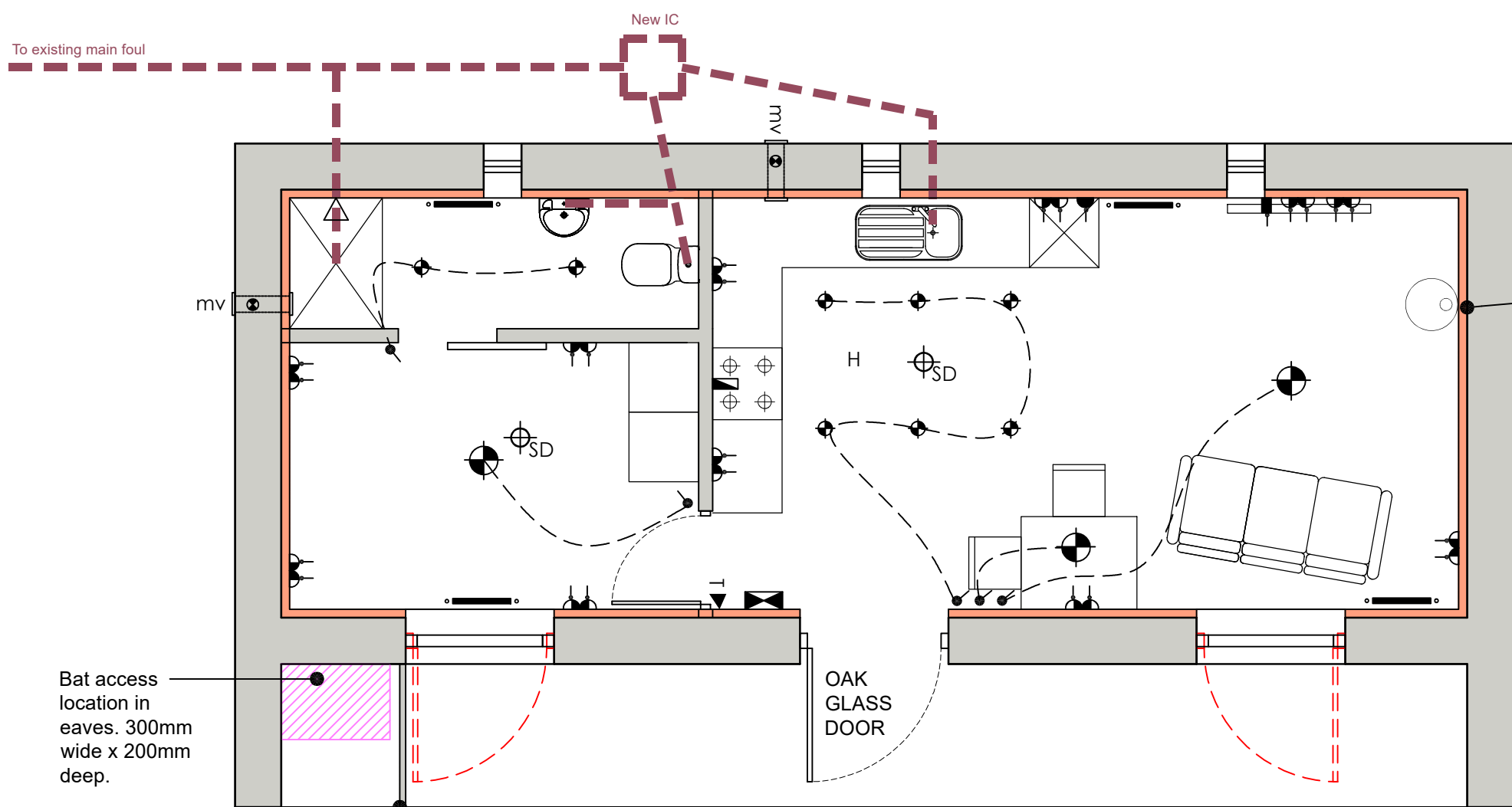


Side elevation
1:50

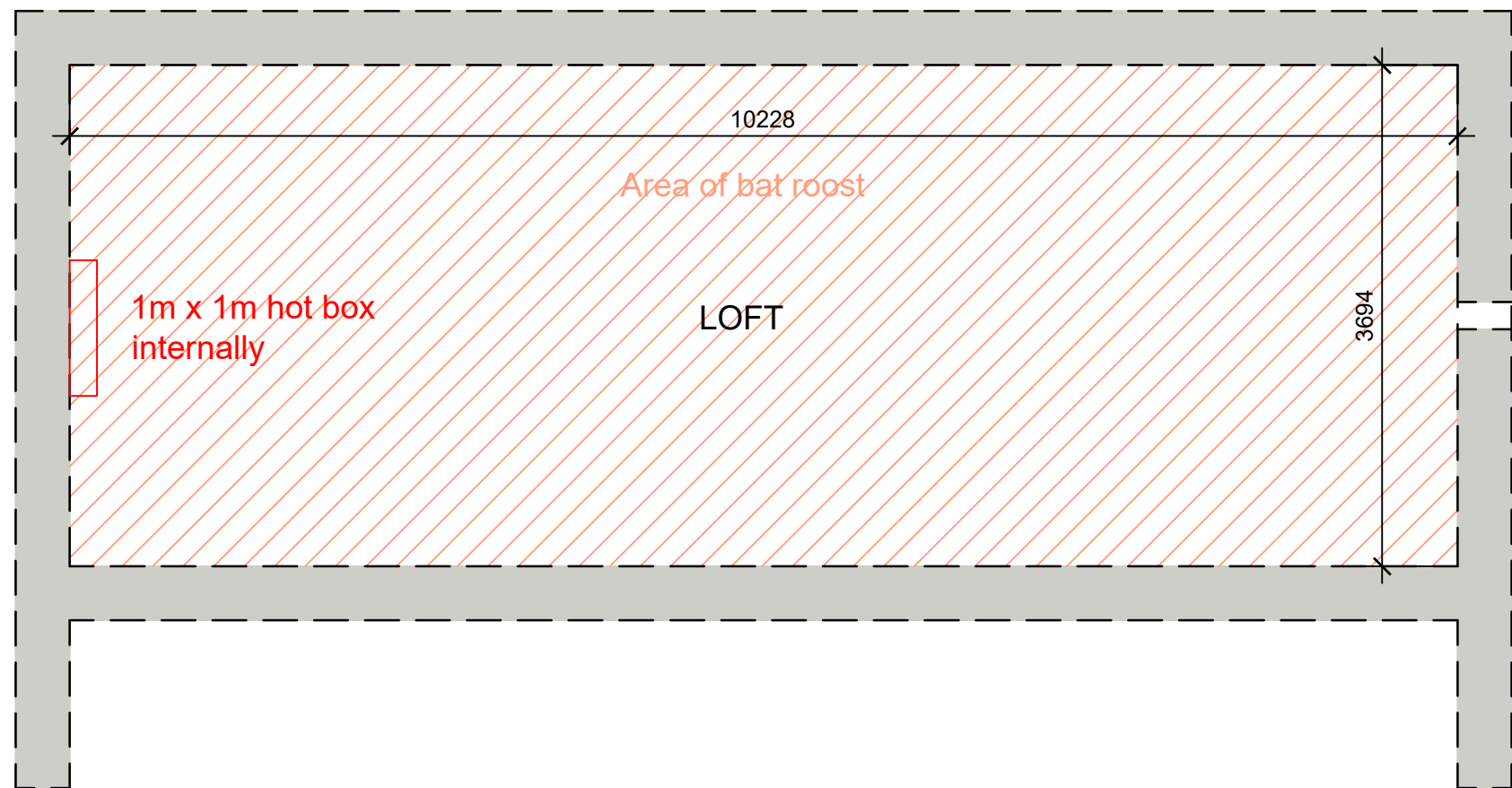
LEGEND :

- Lighting switch
- Electrical shower connection fused spur
- Unswitched fused spur
- Single switched socket outlet
- Single switched socket outlet (below work surface)
- Double switched socket outlet (above worktop in kitchen only)
- Double switched socket outlet (below work surface)
- Room thermostat
- 45 Amp combined cooker control unit and socket outlet
- TV aerial double outlet. Additional outlet required for Satellite tv
- Ceiling mounted pendant fitting
- Ceiling Pendant
- Spot light
- Ceiling mounted batten light IP24 rated
- External dedicated low energy light fitting with PIR and dusk to dawn activation.
- Emergency Lighting to BS5266
- Fire Exit Signage
- Smoke detectors Optical type electrically operated wired to separate circuit. Heat detector to be fitted in kitchens. Alarm control interface to be fitted in hallways.
- Heat Detector
- Electrical consumer unit
- Ceiling mounted mechanical vent with humidistat taken to roof file vent or wall
- Wall ducted mechanical vent with humidistat.
- Radiator position with thermostatic control valves.
- Electric Shower

FIRE SUPPRESSION SYSTEM (Wales)
Residential Automatic Fire Suppression Systems to be designed and installed to BS 9231 and 9252 and to have been tested for use in domestic properties. System to cover the whole dwelling except bathrooms under 5m², cupboards under 2m² and concealed voids. Maintenance of system and information to be given to property owners in accordance with approved document B.



Ground floor plan
1:50



Loft plan
1:50